

### Application

- Easy installation of temperature sensors in measuring point

### Features

- High quality
- Metric, cylinder and NPT threads
- Production acc. to customer requirements possible

### Description

TERMOAPARATURA WROCLAW supplies high quality compression fittings suitable for installation of temperature sensors in measuring point.

Compression fittings UG1 consist of three parts: body with process thread (metric or NPT), olive and compression screw. Body and compression screw are made of stainless steel. Olive made of stainless steel is forceful and resist up to 700°C at typical pressure.

Standard versions of the compression fittings provides gas-tight connection up to 700°C at normal pressure - 0.1 MPa.

Compression fitting allows simple adaptation to the required insertion length at the installation point.

Material : stainless steel  
Sealing olive material : steel, brass, teflon



Stainless steel olives can be adjusted once, after unscrewing, sliding along the sheath is no longer possible.

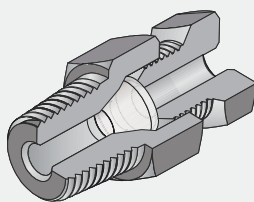
- Max. temperature at process connection +700°C

Teflon olives can be adjusted several times, after unscrewing, repeated sliding along the sheath is still possible.

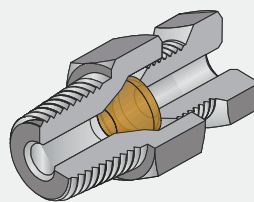
- Max. temperature at process connection +200°C

### Materials

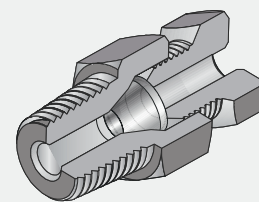
- 1.4301 ( AISI304 )
- 1.4401 ( AISI316 )
- 1.4404 ( AISI316L )
- 1.4541 ( AISI321 )



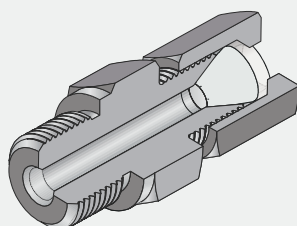
teflon olive  
( up to +200°C )



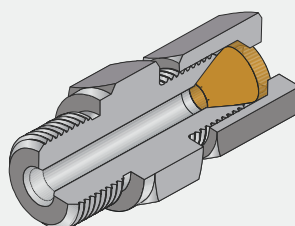
brass olive  
( up to +300°C )



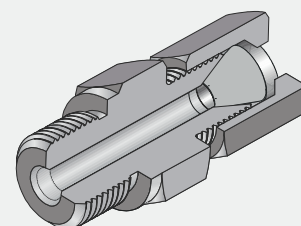
steel olive  
( up to +700°C )



teflon olive  
( up to +200°C )



brass olive  
( up to +300°C )

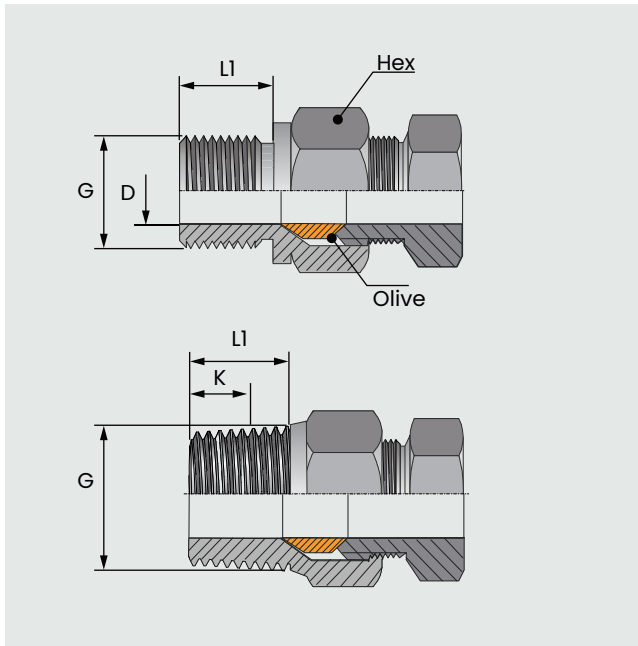


steel olive  
( up to +700°C )

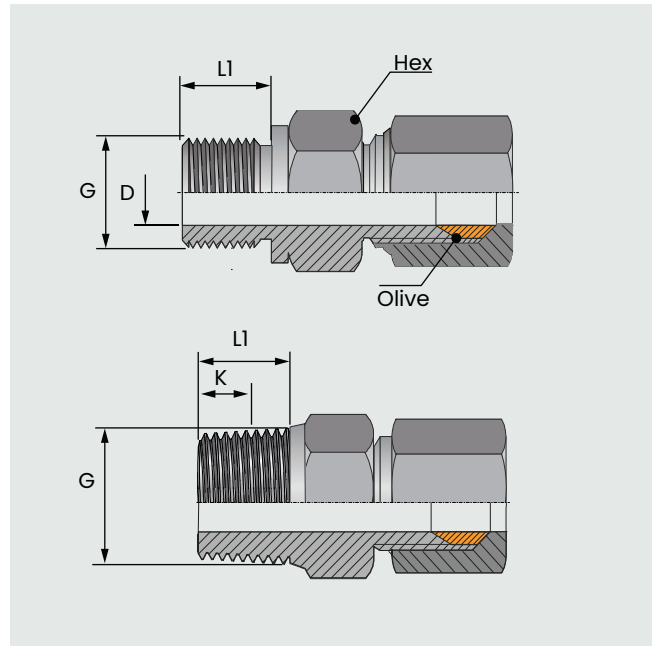
# COMPRESSION FITTINGS

TYPE UG

## Model UG1



## Model UG4



## Dimensions

Thread G	Hex	Length L1 [mm]
M8x1	SW13	10
M10x1	SW13	10
M12x1	SW17	12
M14x1.5	SW17	12
M16x1.5	SW24	15
M18x1.5	SW24	15
M20x1.5	SW30	15
M22x1.5	SW30	15
M24x1.5	SW30	15

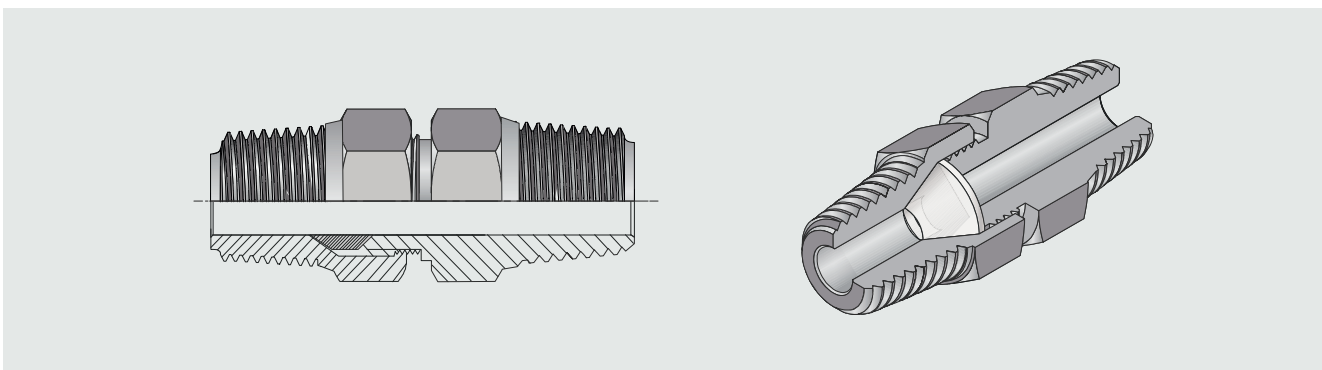
Thread G	Hex	Length L1 [mm]
G1/8"	SW13	10
G1/4"	SW17	12
G3/8"	SW24	12
G1/2"	SW30	15
G3/4"	SW36	18
G1"	SW41	20

Thread G	Hex	Length L1 [mm]
1/8"NPT	SW13	11
1/4"NPT	SW17	14
3/8"NPT	SW17	18
1/2"NPT	SW24	18
3/4"NPT	SW27	20

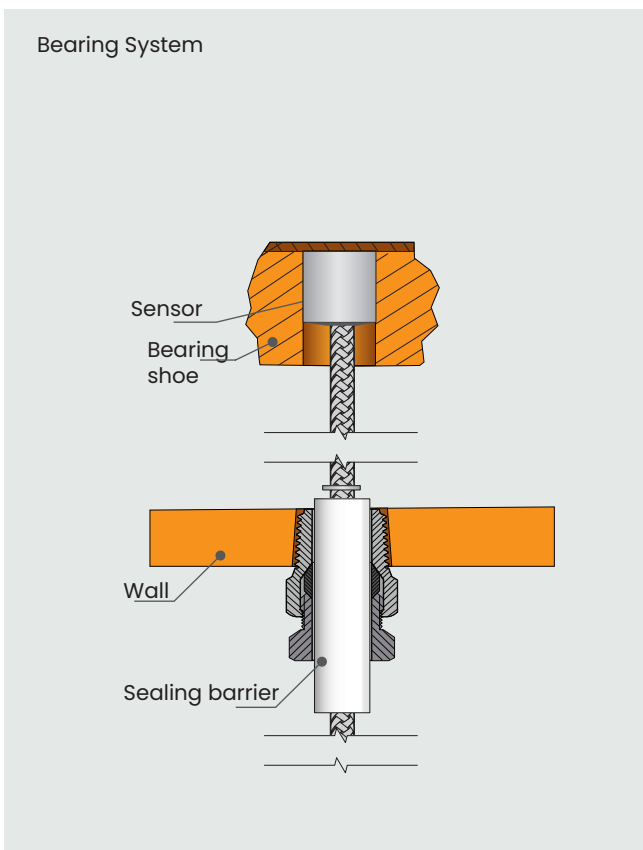
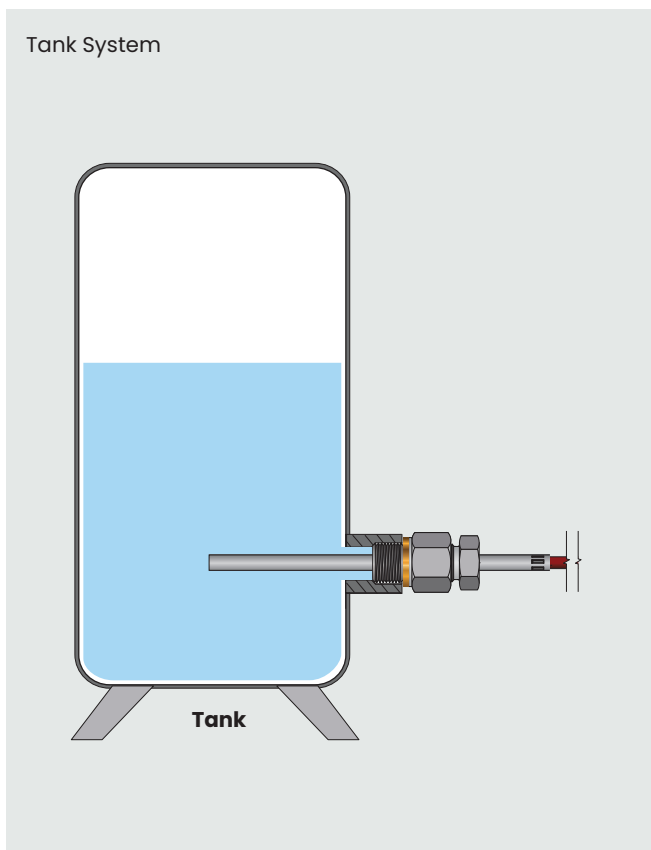
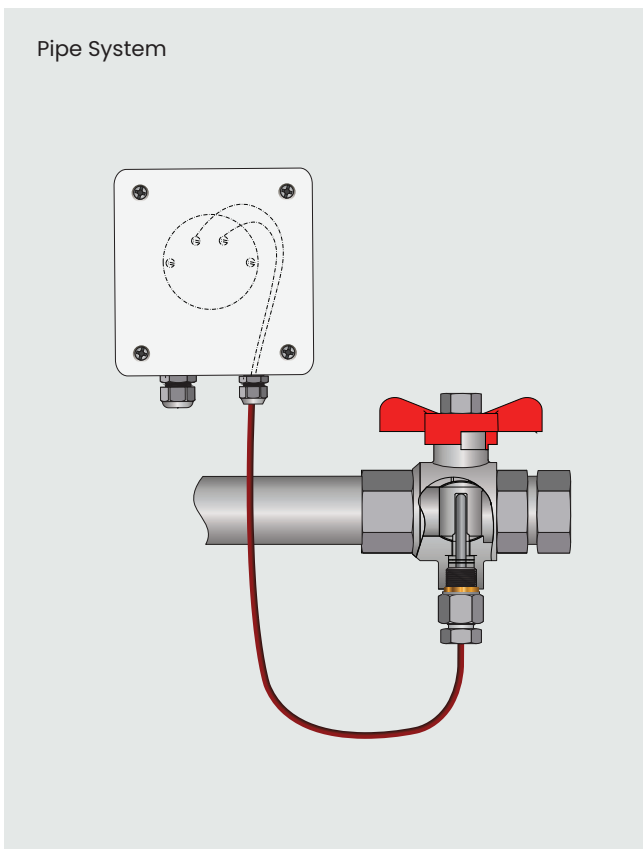
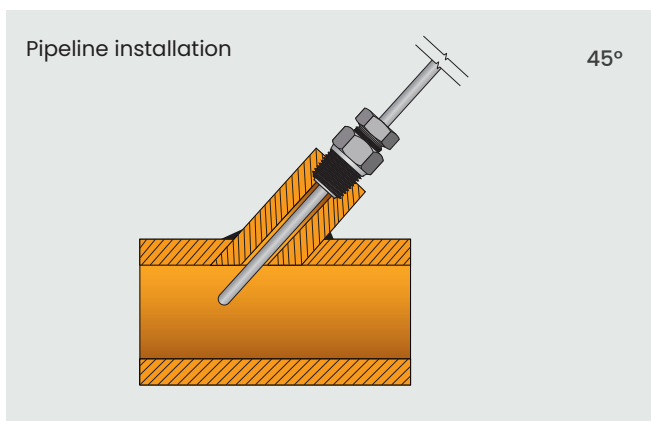
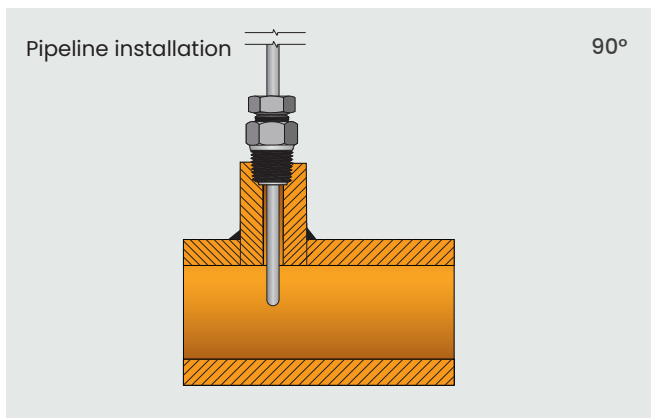
- ① Handtight engagement (K)
- thread 1/2"NPT approx 8,1 mm
  - thread 3/4"NPT approx 8,6 mm
  - thread 3/8"NPT approx 7,3 mm
  - thread 1/4"NPT approx 6,3 mm
  - thread 1/8"NPT approx 5,9 mm

## Other versions

On the customer's request, it is possible to produce a compression fitting with an additional thread, which can be used for assembly of a stainless steel conduit.

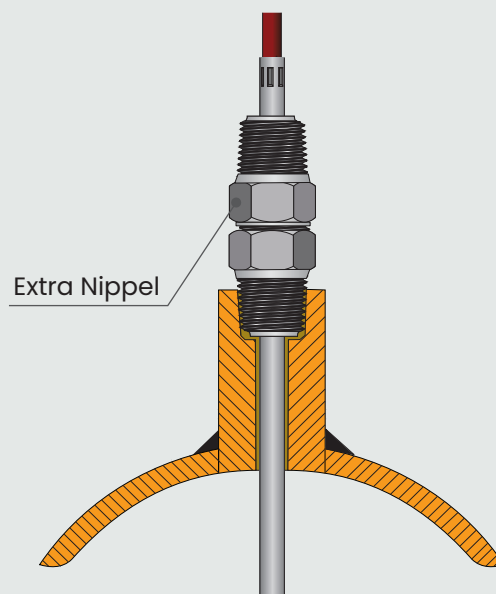
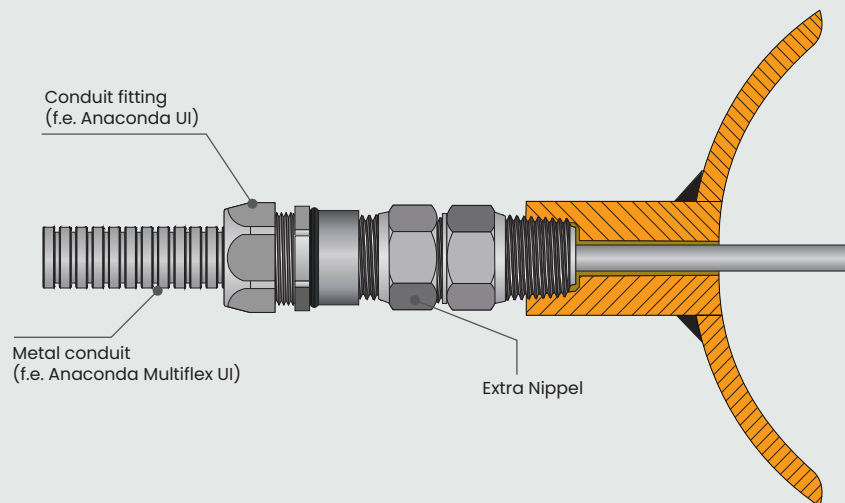


## Installation examples



## Installation examples

Pipeline installation



### Ordering code

UG -----

Order	Parameter	Code	<input checked="" type="checkbox"/>	Description
1	Version	1	<input type="checkbox"/>	version UG1, body with thread and pressing screw
		4	<input type="checkbox"/>	version UG4, body with thread and pressing nut
2	Diameter of sensor D	1.0	<input type="checkbox"/>	Ø1.0 mm
		1.5	<input type="checkbox"/>	Ø1.5 mm
		2.0	<input type="checkbox"/>	Ø2.0 mm
		3.0	<input type="checkbox"/>	Ø3.0 mm
		3.2	<input type="checkbox"/>	Ø3.2 mm
		4.5	<input type="checkbox"/>	Ø4.5 mm
		4.8	<input type="checkbox"/>	Ø4.8 mm
		6.0	<input type="checkbox"/>	Ø6.0 mm
		6.4	<input type="checkbox"/>	Ø6.4 mm
		8.0	<input type="checkbox"/>	Ø8.0 mm
		9.0	<input type="checkbox"/>	Ø9.0 mm
		10.0	<input type="checkbox"/>	Ø10.0 mm
		xxx	<input type="checkbox"/>	Other, please specify
3	Process thread G	xxx	<input type="checkbox"/>	please specify
4	Material	1.4301	<input type="checkbox"/>	stainless steel 1.4301 (AISI304)
		1.4404	<input type="checkbox"/>	stainless steel 1.4404 (AISI316L)
		1.4541	<input type="checkbox"/>	stainless steel 1.4541 (AISI321)
		xxx	<input type="checkbox"/>	Other, please specify
5	Olive	T	<input type="checkbox"/>	teflon®
		M	<input type="checkbox"/>	brass
		S	<input type="checkbox"/>	steel
6	Options	xxx	<input type="checkbox"/>	specify optional construction, f.e. extension thread

### Examples

Compression fitting UG1-6-G1/2"-1.4301-S

( version UG1, body with thread and pressing screw, for sensor diameter Ø6.0 mm, process thread G1/2", stainless steel 1.4301, steel olive )

Compression fitting UG1-4.8-1/4"NPT-1.4301-S

(version UG1, body with thread and pressing screw, for sensor diameter Ø4.8 mm, process thread 1/4"NPT, stainless steel 1.4301, steel olive)

Compression fitting UG1-4.8-1/2"NPT-1.4301-S-1/2"NPT

( version UG1, body with thread and pressing screw, for sensor diameter Ø4.8 mm, process thread 1/2"NPT, stainless steel 1.4301, steel olive, extension thread 1/2"NPT )