

Application

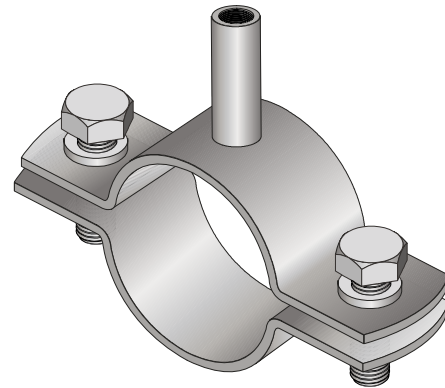
- Mountage on industrial pipe lines
- Chemical and petrochemical industries
- Conventional power generation

Features

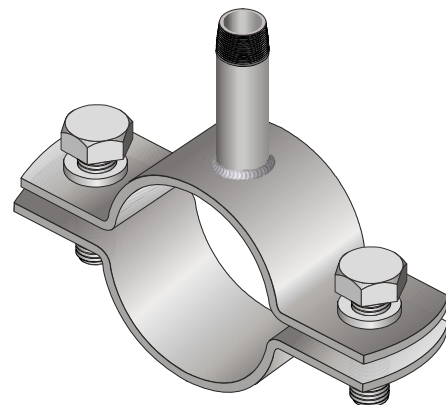
- Pipe clamp acc. to DIN 3567 form A
- Standard pipe clamp material: stainless steel 1.4301 (AISI304)
- Options: 1.4404 (AISI316L), 1.4571 (AISI316Ti), 1.7335 (13CrMo4-5)
- Suitable for pipe lines diameter: DN25 .. DN250
- Combining with various temperature sensors depending on application and protection explosion level (models UCL-F, UCL-M, UCL-B)

The UCL clamp adaptor enables simple installation of any temperature sensor on a pipeline without need of welding. This avoids possible damage of a pipeline caused by fatigue cracking, corrosion or abrasion.

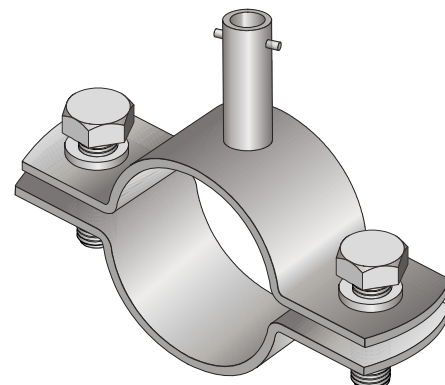
The clamp can be dismantled and reused in another measuring place.



Pipe clamp **UCL-F**
with female threaded neck

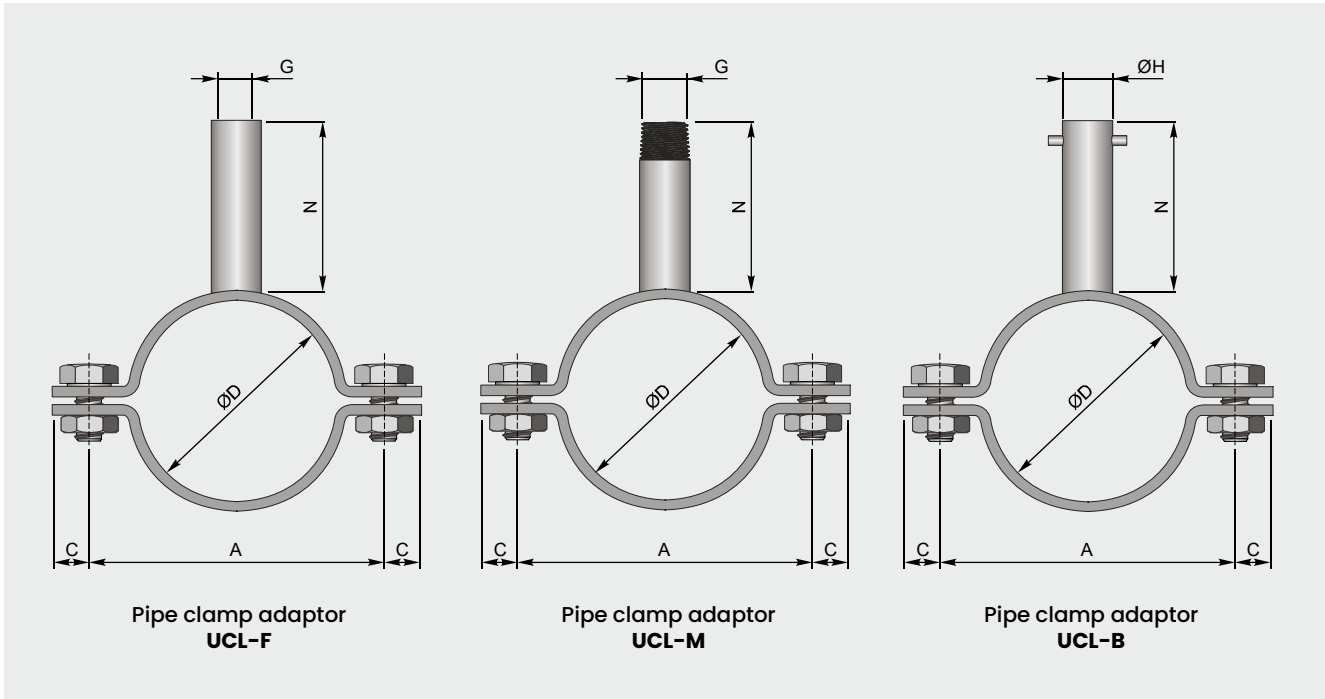


Pipe clamp **UCL-M**
with male thread neck



Pipe clamp **UCL-B**
with bayonet neck

Versions

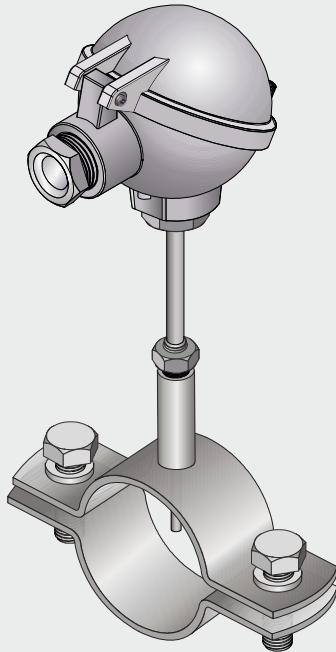


Available sizes

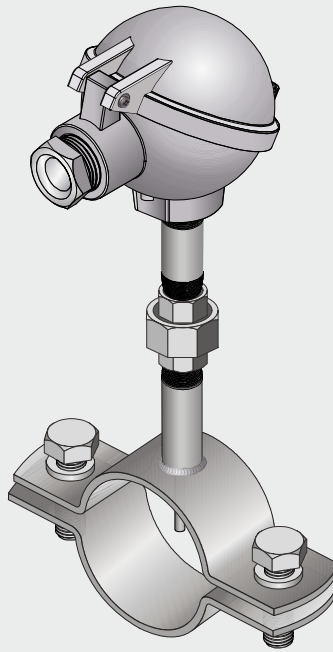
The DIN 3567 standard specifies available sizes of clamps. Below standard dimensions.

| Suitable for DN nominal size | | Diameter ØD | Dimension A | Clamp width B | Dimension C | Dedicated screws (min. length) |
|------------------------------|--------|-------------|-------------|---------------|-------------|--------------------------------|
| 20 | | 25 | 62 | 30 | 15 | M10x35 |
| | 3/4" | 26.9 | 66 | | | |
| 25 | | 30 | 68 | | | |
| | 1" | 33.7 | 72 | | | |
| 32 | | 38 | 76 | | | |
| | 1 1/4" | 42.4 | 82 | | | |
| 40 | | 44.5 | 84 | | | |
| | 1 1/2" | 48.3 | 88 | | | |
| 50 | | 57 | 104 | 40 | 18 | M12x40 |
| | 2" | 60.3 | 108 | | | |
| 65 | 2 1/2" | 76.1 | 122 | | | |
| 80 | 3" | 88.9 | 136 | | | |
| 100 | | 108 | 172 | 50 | 24 | M16x55 |
| | 4" | 114.3 | 178 | | | |
| 125 | | 133 | 196 | | | |
| | 5" | 139.7 | 204 | | | |
| 150 | | 159 | 222 | | | |
| | 6" | 168.3 | 232 | | | |
| 200 | | 216 | 280 | | | |
| | 8" | 219.1 | 284 | | | |
| 250 | | 267 | 342 | 60 | 30 | M20x60 |
| | 10" | 273 | 348 | | | |
| 300 | 12" | 323.9 | 398 | | | |

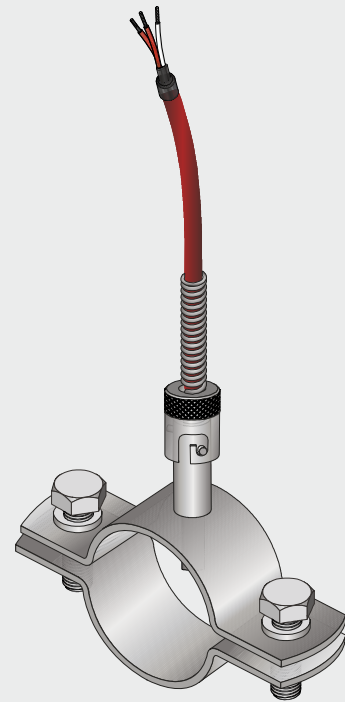
Examples of moutage



Pipe clamp adaptor
UCL-F
with installed sensor
model TOPWS



Pipe clamp adaptor
UCL-M
with installed sensor
model TOPNUN



Pipe clamp adaptor
UCL-B
with installed
model TOPE311

Ordering code

UCL - - - - - -

| | | | |
|-----|-----------------------|--|--------------------------------------|
| 1 | <input type="text"/> | Adaptor | |
| | | F | pipe clamp with female threaded neck |
| | | M | pipe clamp with male threaded neck |
| | | B | pipe clamp with bayonet neck |
| 2 | <input type="text"/> | Pipe line nominal diameter | |
| | | DN20 | DN20 |
| | | DN25 | DN25 |
| | | xxx | other, please specify |
| 3 | <input type="text"/> | Neck length N | |
| | | 50 | 50 mm |
| | | 100 | 100 mm |
| | | 150 | 150 mm |
| | | 200 | 200 mm |
| | | 250 | 250 mm |
| xxx | other, please specify | | |
| 4 | <input type="text"/> | Adaptor thread G (not for UCL-B) | |
| | | G1/4" | G1/4" |
| | | G1/2" | G1/2" |
| | | 1/2"NPT | 1/2"NPT |
| | | M18x1.5 | M18x1.5 |
| | | M20x1.5 | M20x1.5 |
| | | xxx | other, please specify |
| 5 | <input type="text"/> | Diameter H (not for UCL-F, UCL-M) | |
| | | 10.9 | Ø 10.9 mm |
| | | 11.9 | Ø 11.9 mm |
| | | 14.9 | Ø 14.9 mm |
| | | xxx | other, please specify |
| 6 | <input type="text"/> | Pipe clamp material | |
| | | 1.4301 | Stainless Steel 1.4301 (AISI304) |
| | | 1.4404 | Stainless Steel 1.4404 (AISI316L) |
| | | xxx | other, please specify |

Example

Pipe clamp UCL-F-DN100-150-M18x1.5-1.4301
 (pipe clamp adaptor with female threaded neck, suitable for pipe DN100, length N=150 mm, thread M18x1.5, pipe clamp material 1.4301)

Pipe clamp UCL-M-DN150-150-1/2"NPT-1.4301
 (pipe clamp adaptor with male threaded neck, suitable for pipe DN150, length N=150 mm, gwint 1/2"NPT, pipe clamp material 1.4301)

Pipe clamp UCL-B-DN50-50-11.9-1.4301
 (pipe clamp with bayonet adaptor, suitable for pipe DN50, length N=50 mm, diameter ØF=11.9 mm, pipe clamp material 1.4301)