

CONNECTORS

FOR THERMOCOUPLES AND RESISTANCE THERMOMETERS




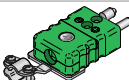


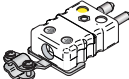
Catalogue | Edition 2023

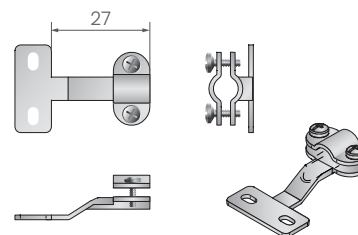
STANDARD CONNECTOR ACCESSORIES

Cable clamp, Type S-090-S

S-090-M.. cable mounting for standard connector provides optimal protection against pulling cable out. Unique construction allows to mounting cables of wide outside diameters range.

Order code

Cable clamp	for connector	
 S-090-S	S-020	
	S-023	
	S-025	
S-090-SC	S-027	



S-090-S

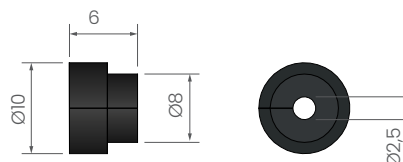
cable clamp

Connector grommet, Type S-092-S

S-092-S seal is mounted in connector's hole for preventing of moisture and dirt. It is used mainly with small diameter cables

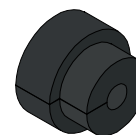
Order code

Connector grommet	
S-092-S	



S-092-S

cable grommet



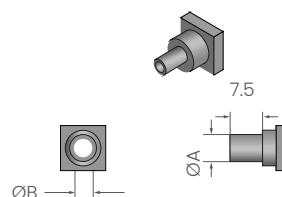
Sleeve for standard connector, Type S-095-S

S-095-S sleeve is designed for soldering or crimping mineral insulated cable or insulated thermocouple cable..

Order code

Material: brass

Sleeve	A	B	
S-095-S-1.1	1.10	2.40	
S-095-S-1.6	1.60	2.40	
S-095-S-2.1	2.10	3.20	
S-095-S-3.1	3.10	4.50	
S-095-S-4.6	4.60	6.00	
S-095-S-6.1	6.10	7.90	



S-095-S

sleeve

